



CPD

CENTRAL POWERSPORTS
Distribution

NOW YOU CAN ORDER SWM PARTS DIRECT ONLINE, 24 HOURS A DAY, 7 DAYS A WEEK, RIGHT FROM YOUR COMPUTER OR SMARTPHONE! PRODUCT SHIPS DIRECT, RIGHT TO YOUR DOORSTEP, AND YOUR DEALER RECEIVES A COMMISSION ON THE SALE.



 WWW.CPD.DIRECT



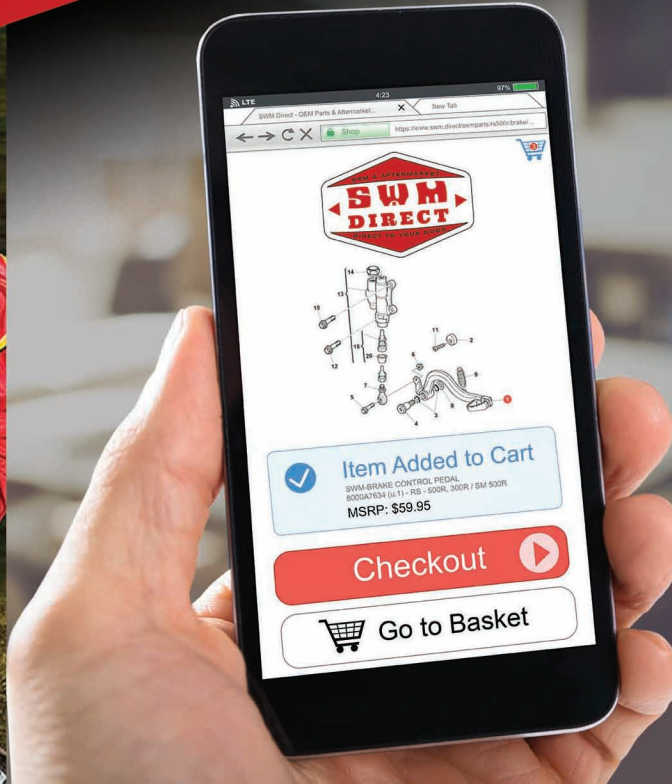
2021 Range



✓ BEAUTIFUL ITALIAN CRAFTSMANSHIP ✓ QUALITY EUROPEAN COMPONENTS
✓ AFFORDABLE

SWM REALIZES THAT \$10,000+ DIRT BIKES ARE NOT FOR EVERYONE. THE MY2021 MODEL LINEUP FROM SWM DELIVERS THE PERFECT BLEND OF REAL-WORLD PERFORMANCE AND AFFORDABILITY THAT LETS RIDERS GET OUT INTO NATURE, DAY AFTER DAY, WITHOUT BREAKING THE BANK. THE RS300R/500R AND SM500R MODELS ARE 50-STATE STREET-LEGAL, PROVIDING COMFORT ON THE BLACKTOP, AND ENSURING THE FUN CONTINUES WHEN THE PAVEMENT STOPS. AND WITH EFI, GREAT SUSPENSION AND BRAKES, AND STRONG ENGINE PERFORMANCE, YOU'LL BE WONDERING HOW WE DID IT AND KEPT THE PRICE SO LOW... AND HOW THE OTHER GUYS GOT AWAY WITH CHARGING SO MUCH...

FOR MORE INFORMATION, VISIT: WWW.SWM-USA.COM



RS 300R/500R
SM 500R

RS 300R 500R

THE SWM RS300R & RS500R OFFER FULL FEATURES AND GREAT PERFORMANCE WITHOUT BREAKING THE BANK

Have you ever stopped to wonder why dirtbikes cost so much nowadays? What happened to the sport being affordable? SWM wondered that too, and they set out to do something about it when they designed the RS line.

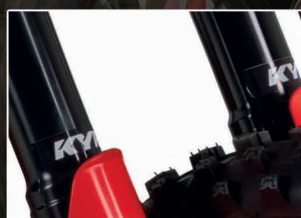
Both the RS300R & RS500R models are 50-state street legal, ensuring that the fun doesn't have to stop just because the trail does. But these are serious dirtbikes, with just the bare-minimum of street-legality to get you a license plate.

The RS300R/500R's Fuel-Injected Four Stroke motors provide plenty of torque and power. And great suspension and brakes from name-brand European companies complete the package.

Isn't it time you stopped wasting money on frills and got back to the foundations that make off-road riding fun?



SWM has built the RS line to give you everything you need and nothing you don't - there's no need for traction control or a smart phone app out in the real world! But REAL riders still want the Goods:



KYB SUSPENSION

KYB has the best-feeling suspension in the industry. RS models all feature a KYB 48mm fork and fully-adjustable KYB shock, with almost 12" of travel front and rear. They will gobble up rocks, roots, and back right out of the box!



MIKUNI FUEL INJECTION

A Mikuni fuel injection system, controlled by a GET ECU, provides crisp throttle response, improved fuel economy, quick starting hot or cold, and the proper fuel mixture, regardless of temperature and elevation.



BREMBO BRAKES

Brembo brake master cylinders and calipers provide the perfect balance of feel and power. They offer great modulation and feedback without being too grabby, but they still offer plenty of bite to get you slowed down from top speed in a hurry.

RS 500 (300) < SM500 >

ENGINE	4-Stroke, Single-Cylinder, Liquid-Cooled
DISPLACEMENT	501cc (297.6cc)
BORE x STROKE	97mm x 67.8mm (83mm x 55mm)
COMP RATIO	12.9 : 1
STARTER	Electric
GEARBOX	6-Speed Gearbox with Multidisc Clutch in Oil Bath
FUEL SYSTEM	Mikuni D42 EFI
FRAME	Central Backbone Chrome-Molybdenum with Aluminum Alloy Subframe
SWINGARM	Aluminum with Linkage System
FRONT FORK	KYB 48mm Closed-Cartridge, 11.6" Travel < KYB 50mm Closed-Cartridge, 9.8" Travel >
REAR SHOCK	KYB Adjustable Hi-Lo Comp & Reb, 11.65" Travel < KYB Adjustable Hi-Lo Comp & Reb, 11.4" Travel >
FRONT RIM/TIRE	1.6x21" Rim, 90/90-21 < 3.5x17" Rim, 120/70-17 >
REAR RIM/TIRE	2.15x18" Rim, 140/80-18 < 4.25x17" Rim, 150/60-17 >
FRONT BRAKE	Brembo Caliper, 260mm Disc < 320mm Disc, ABS >
REAR BRAKE	Brembo Caliper, 240mm Disc < ABS >
FUEL CAPACITY	1.98 Gallons < 1.9 Gallons >
CURB WEIGHT	256lbs (no fuel) (245lbs (no fuel)) < 293lbs (no fuel) >
WHEELBASE	58.86" < 59.2" >
DIMENSIONS	88.19" (L) x 32.28" (W) x 50.59" (H) < 83.07" (L) x 32.28" (W) x 49.21" (H) >
SEAT HEIGHT	37.6" < 36.2" >

SM 500R



SWM SM500R - THE BIKE IS STREET LEGAL... HOW YOU RIDE IT MAY NOT BE...

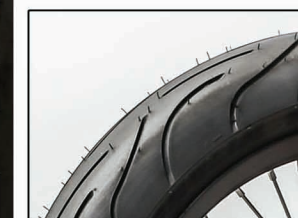
The SM500R is the perfect weapon for the urban landscape. It has all the hallmarks of a classic supermotard bike - big four-stroke torque, sticky tires, and dirtbike agility and handling.

Like the rest of the SWM lineup, the SM500R offers great performance and excitement while being easy on your wallet... much easier than those speeding tickets might be...



320MM FRONT DISC & ABS

A 320mm front disc with a monstrous 4-piston Brembo caliper reigns in this beast in a hurry, and the switchable ABS system lets the rider turn Anti-Lock Braking on or off at will.



17" WHEELS

The SM500R comes with 17x3.5" front, 17x4.25" rear supermoto rims, wrapped in sticky Michelin Pilot Power 2CT tires, ensuring good grip and strong performance.